

Fair Facilities Funding for All Public Schools

HB 1572 (Dutton) & SB 1722 (Paxton)

All public school students deserve safe and secure school facilities designed for teaching and learning, but students in public charter schools are being left behind.

The Problem

Texas public charter schools receive an average of **\$966 less than ISDs in per pupil funding. Unequal facilities funding drives the difference:**

Most facilities funding for ISDs is from local property taxes, but public charter schools do not and cannot levy property taxes.

In 2017, HB 21 (85-1) provided public charter schools with facilities funding for the very first time, using a carefully crafted formula:

- ⇒ Calculated using the average tax rate levied by districts to pay for bond debt issued to fund facilities construction.
- ⇒ **Restricted to allowable uses** including facility purchase, lease, maintenance, and property taxes.
- ⇒ **Restricted to schools rated "acceptable"** under state accountability.

HOWEVER, the law also **arbitrarily capped total facilities funding for all public charter schools at \$60 million**. The cap **limits public charter schools to just one-fifth of the facilities funding** provided under the formula.

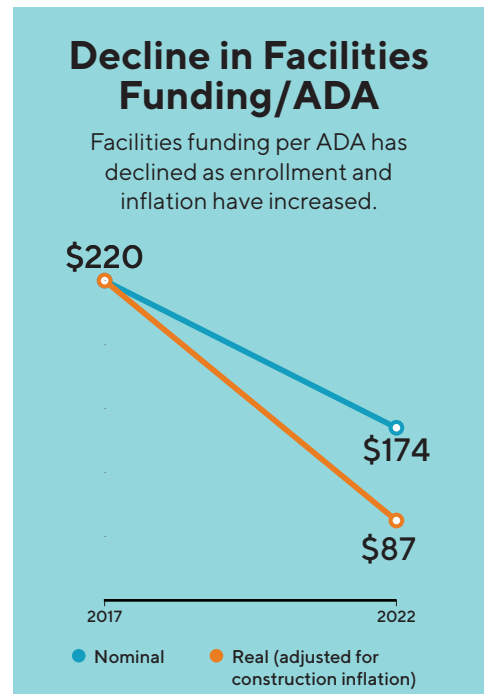
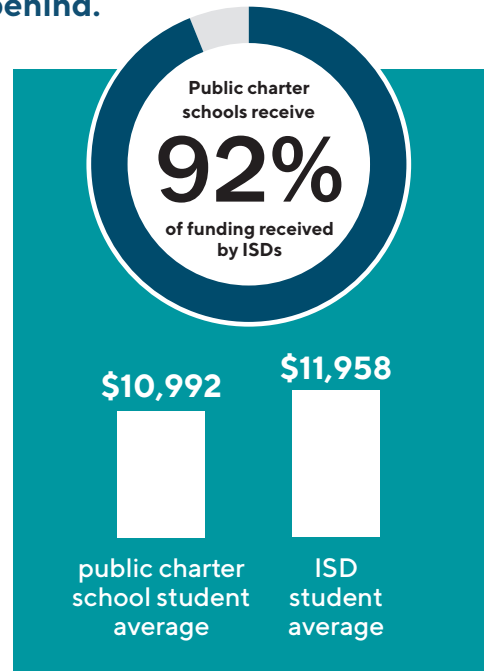
Meanwhile, the Producer Price Index for Final Demand Construction has increased 50% since 2017, deeply eroding schools' ability to build, renovate, and secure facilities. Public charter schools now receive just \$87 per student in facilities funding, adjusted for this inflation.

Use the formula in statute to ensure fair facilities funding for public charter schools.

The Legislature wisely enacted a facilities formula that provides equity for public charter schools and ISDs. That doesn't have to change.

It's time to eliminate the arbitrary cap that prevents equitable facilities funding across public schools.

The Solution



Questions? Contact Bryce Adams at badams@txcharterschools.org.

Public Charter School Facilities Funding: Then and Now

	2017	2023
Number of Public Charter School Districts	180	185
Number of Public Charter School Campuses Eligible for Facilities Funding	646	840 (+30%)
Statewide Public Charter School Enrollment	296,323	404,740 (+36%)
Facilities Funding per pupil with \$60M cap (accounting for charter enrollment and ADA growth)	\$220	\$174
Facilities Funding per pupil with \$60M cap (adjusted w/ PPI for final demand construction, 50% since 7/2017)		\$87
Funding Gap per ADA between ISDs & Public Charter Schools (TEA Rider 65)	(\$799)	(\$966)
Facilities Funding per pupil without \$60M cap (HB 1572 by Dutton)		\$896

Questions? Contact Bryce Adams at badams@txcharterschools.org.